

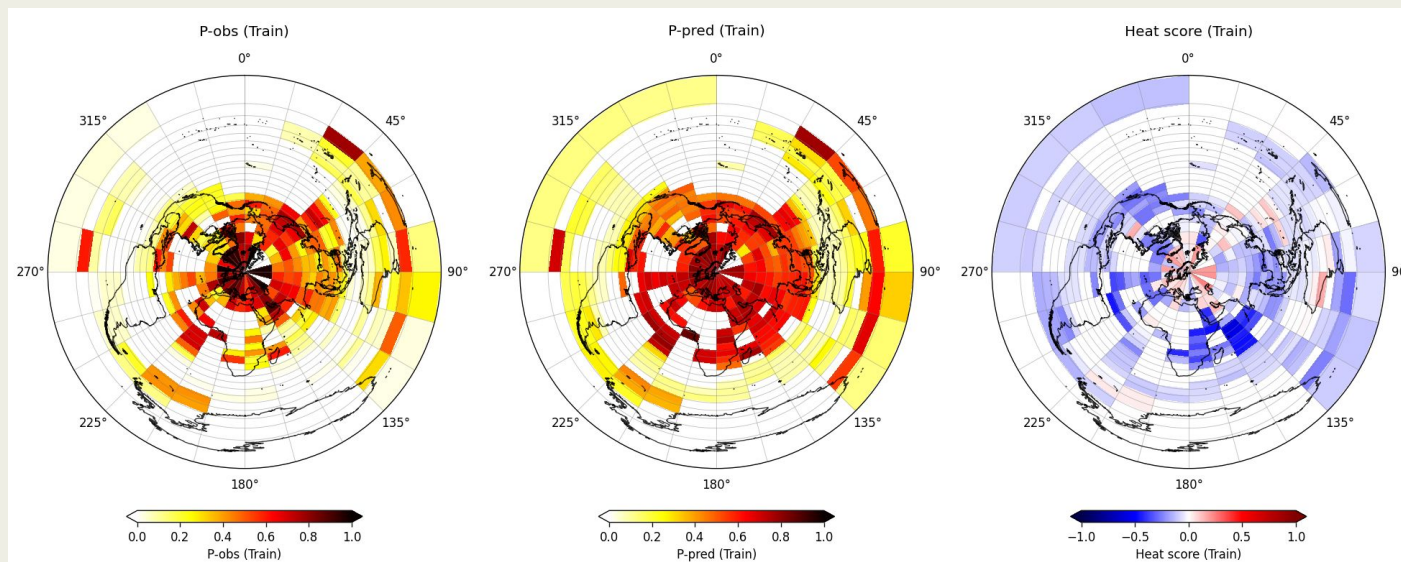
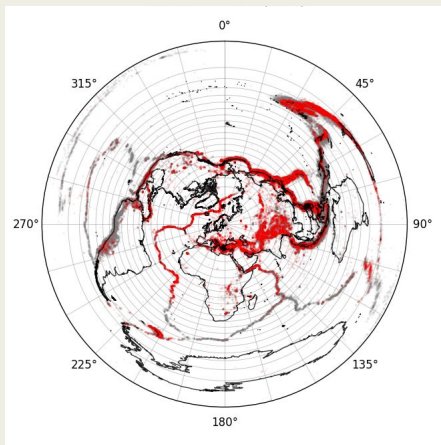
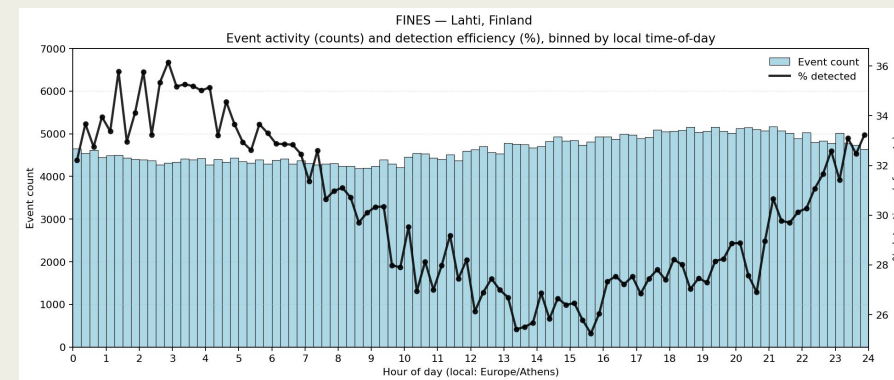
- **Motivation:** Which station–event factors control detection?

- **Approach:** Baseline ML model (mag, dist, depth)

vs. new model with Heat Score

- **Findings:** Heat Score adds modest but consistent skill.

Local time-of-day also matters.



- **Implication:** Provides a framework to evaluate stations and guide strategies to strengthen network performance.