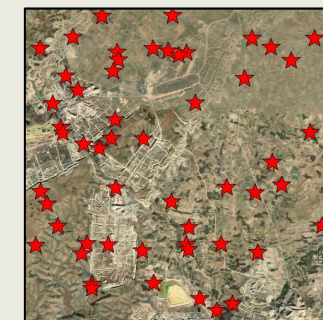
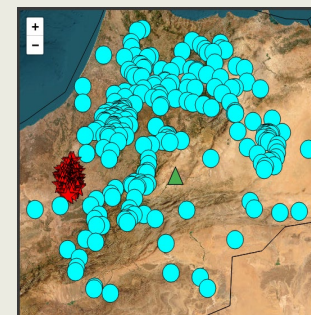


K. Goddard¹, S. Badrane², M. Menzhi², C. Saikia¹

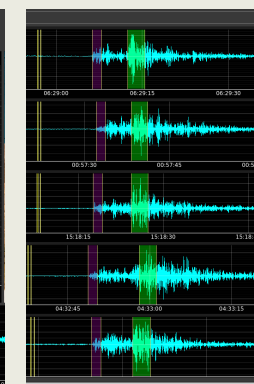
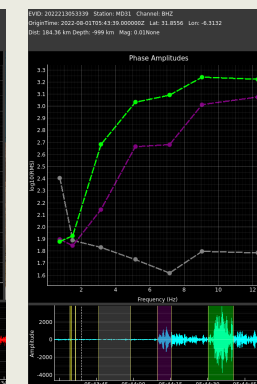
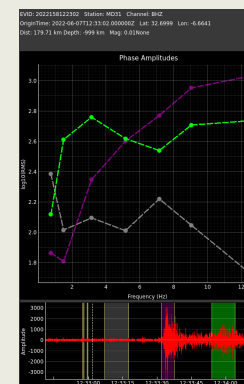
1. Air Force Technical Application Center

2. Centre National pour la Recherche Scientifique et Technique

- Come over to see our poster if you would like to find out more about:
- Pg/Lg Ratios in Morocco
 - their utility for discriminating earthquakes and explosion
 - how they are computed
- Pg/Lg Ratios as Features in Machine Learning
 - models used
 - features applied
 - best frequency bands to use
- Transferability of the Model
 - Results from station in the seismic network
- Possible Events Classified as Earthquakes in the Mining Region



Measuring Amplitudes



Ratio Features

