

## Azores infrasound network: Statistical analysis and characterisation of the main detections

Linda Inês Silva<sup>1</sup>, Sandro Matos<sup>1</sup>, Emanuele Marchetti<sup>2</sup> and Nicolau Wallenstein<sup>1</sup>

<sup>1</sup> Instituto de Investigação em Vulcanologia e Avaliação de Riscos  
(IVAR, Universidade dos Açores)

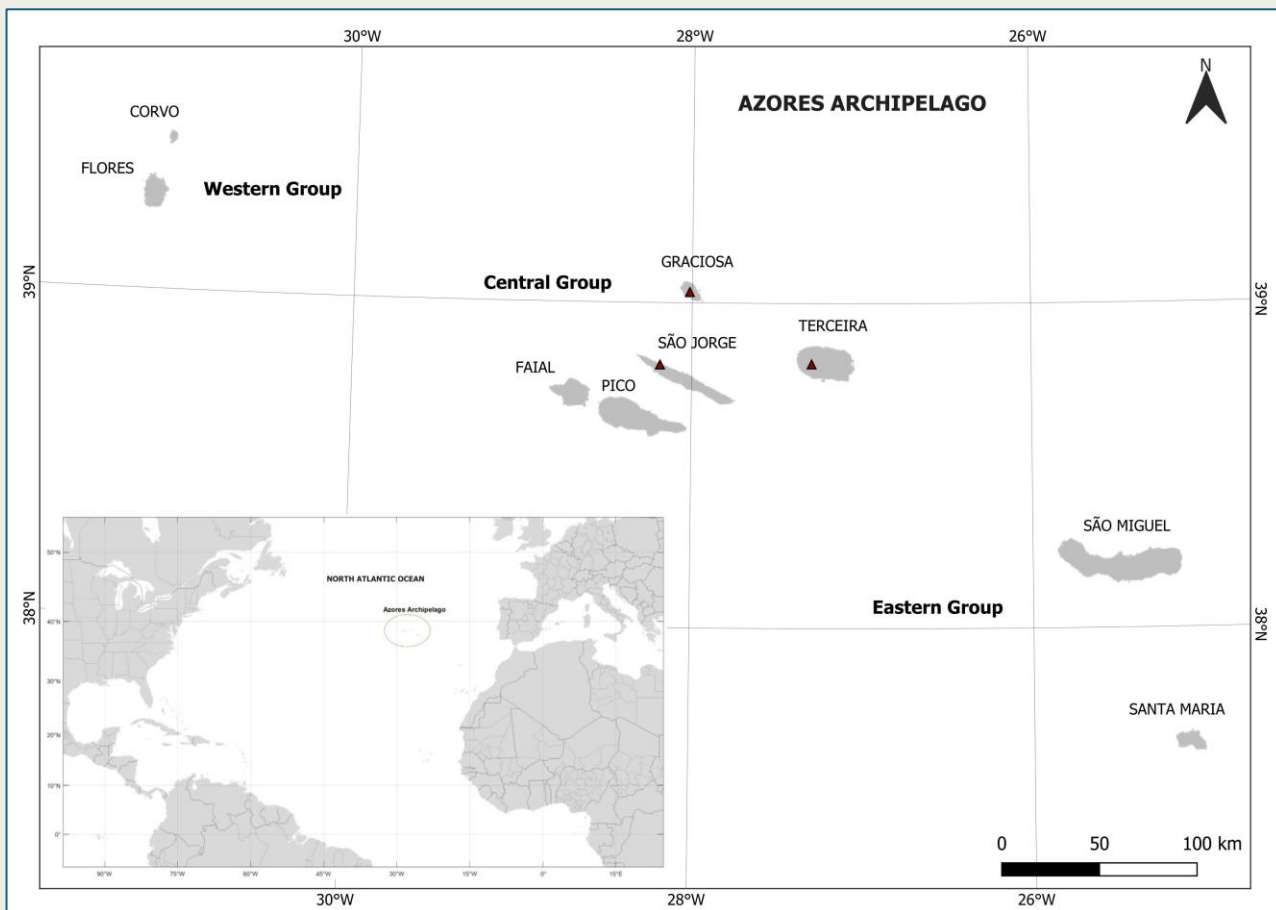
<sup>2</sup> Dipartimento di Scienze della Terra, Università di Firenze (UniFi)



Presentation Date: 09 September 2025

DISCLAIMER: This work was supported by FCT, I.P., the Portuguese national funding agency for science, research, and technology, under the Projects UID/00643/2023

## Introduction to the Azores infrasound network

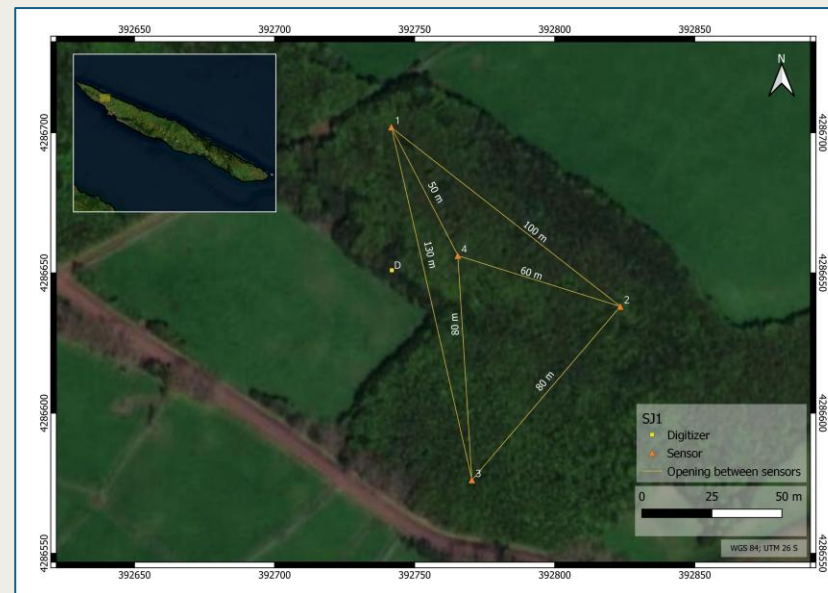


- **IMS IS42** with 8 absolute pressure sensors on Graciosa Island
- **SJ1** portable array with 4 differential sensors on São Jorge Island
- **TER** portable array with 6 differential sensors on Terceira Island
- Plans to expand the infrasound network to Faial Island (FAY) and Santa Maria Island (see P3.1-641)

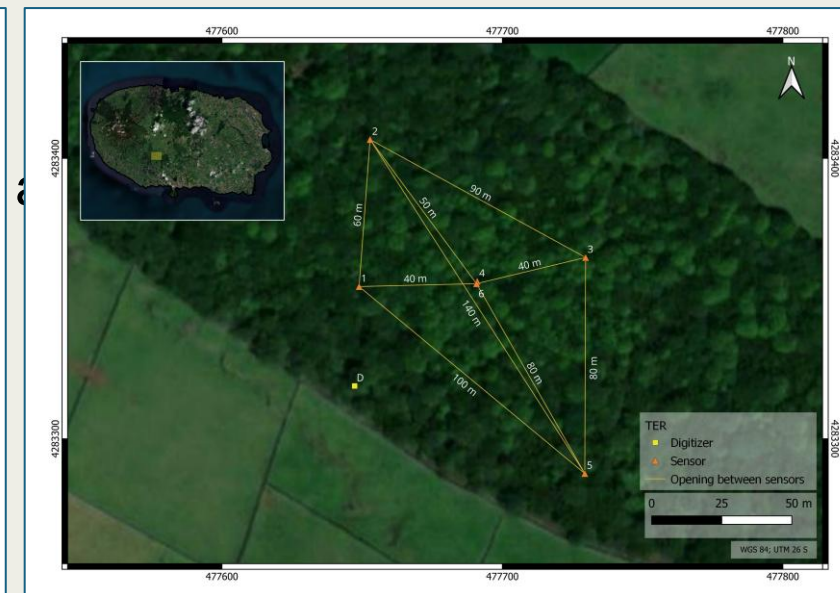
### Introduction to the Azores infrasound network



- Geometry: main array shaped as a pentagon with an aperture triangular sub-array
- Maximum aperture of  $\approx 2$  Km



- Geometry: centred triangular design
- Maximum aperture of  $\approx 130$  m



- Geometry: diamond shape with 2 centred sensors
- Maximum aperture of  $\approx 140$  m

## Multichannel correlation analysis in the time domain

Windows length: 10 s

Shift: 1 s (up to 86400 detections day)

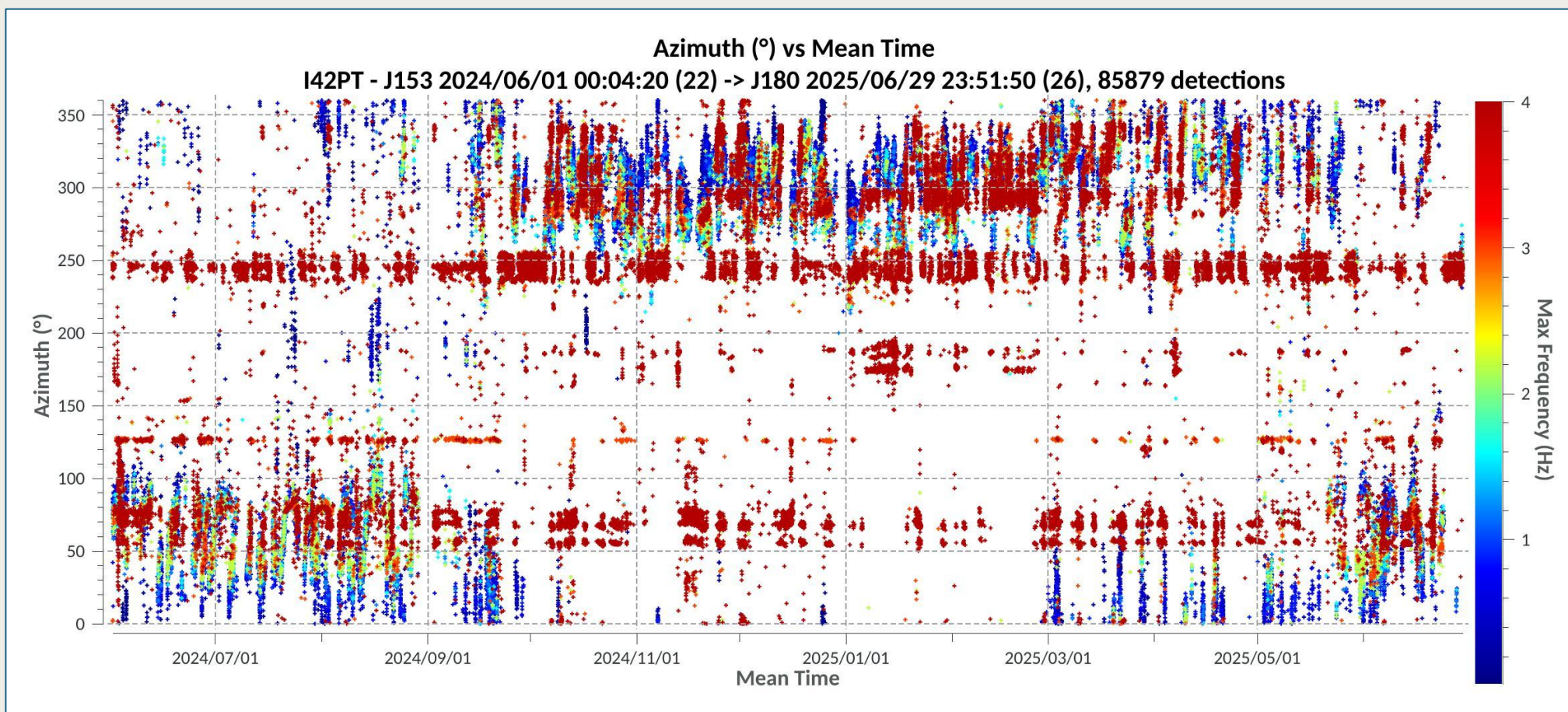
Band pass filtered: [1 to 10 Hz]

Detections characterized in terms of amplitude, back-azimuth, apparent velocity, residuals and frequency (PSD on the beamformed data window)





## IS42: 1 year data



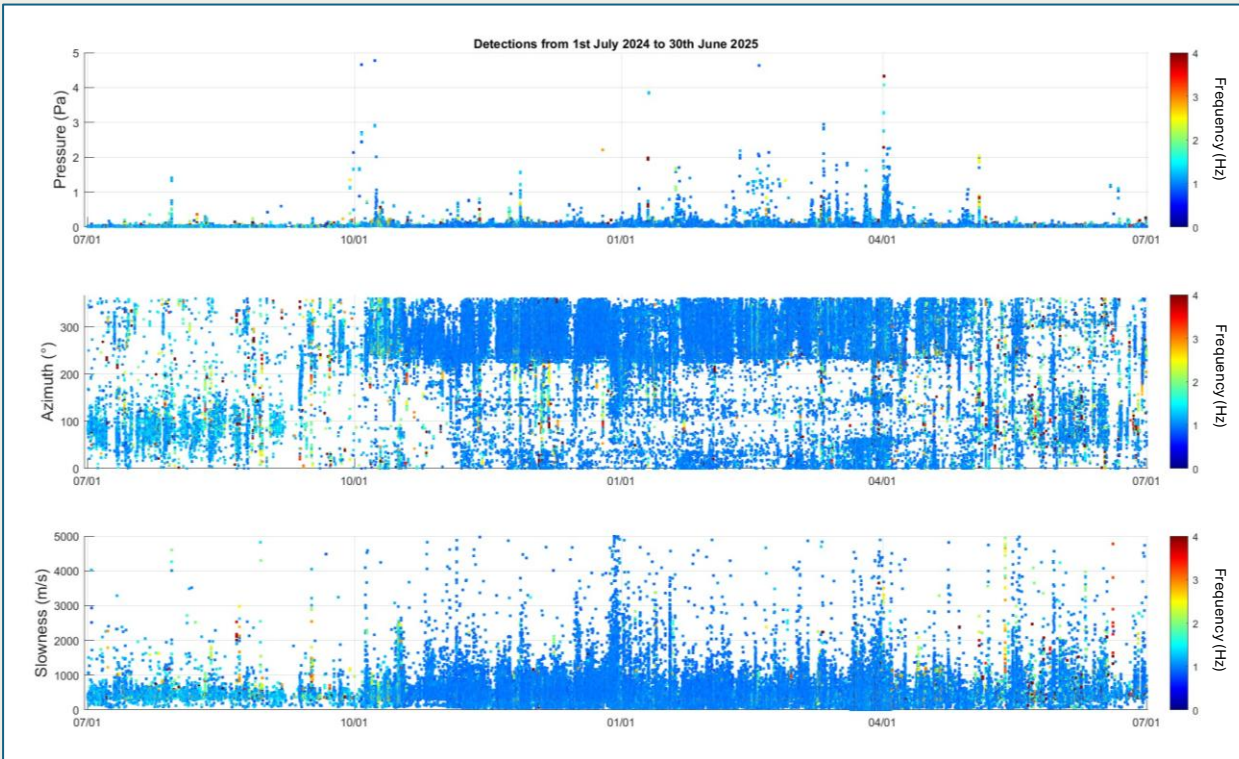
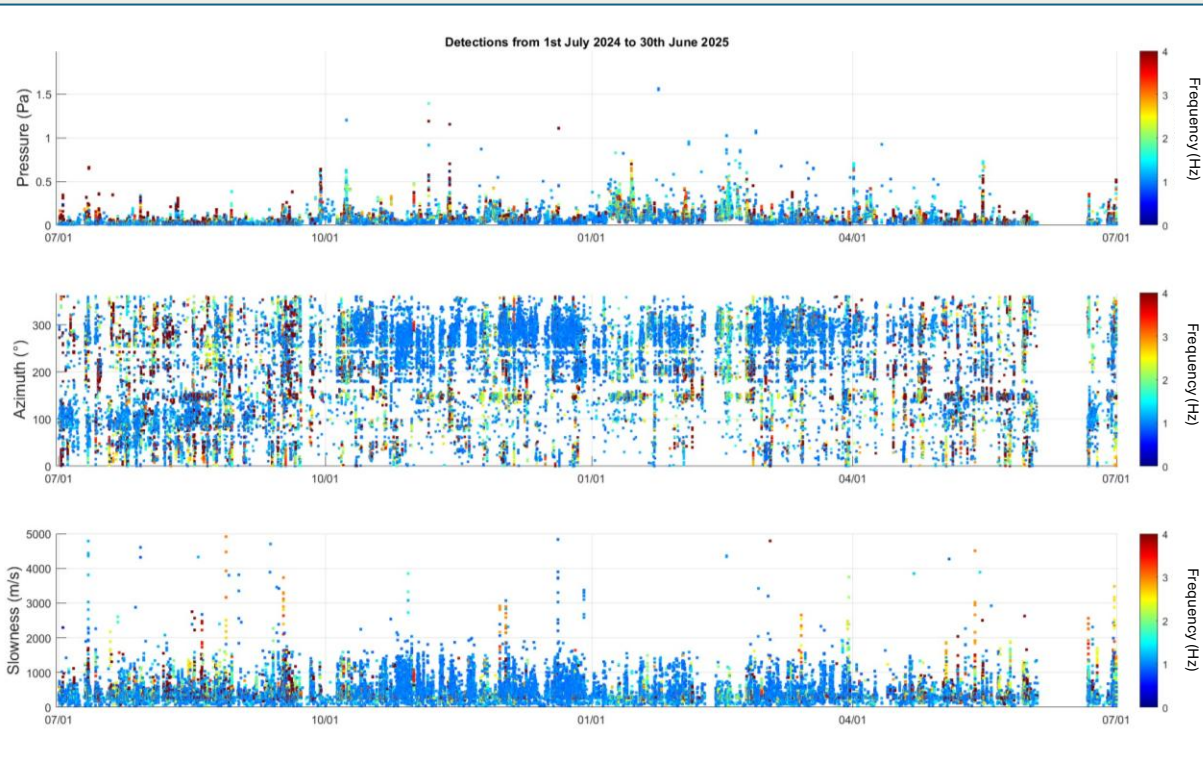




## 1 year data

SJ1

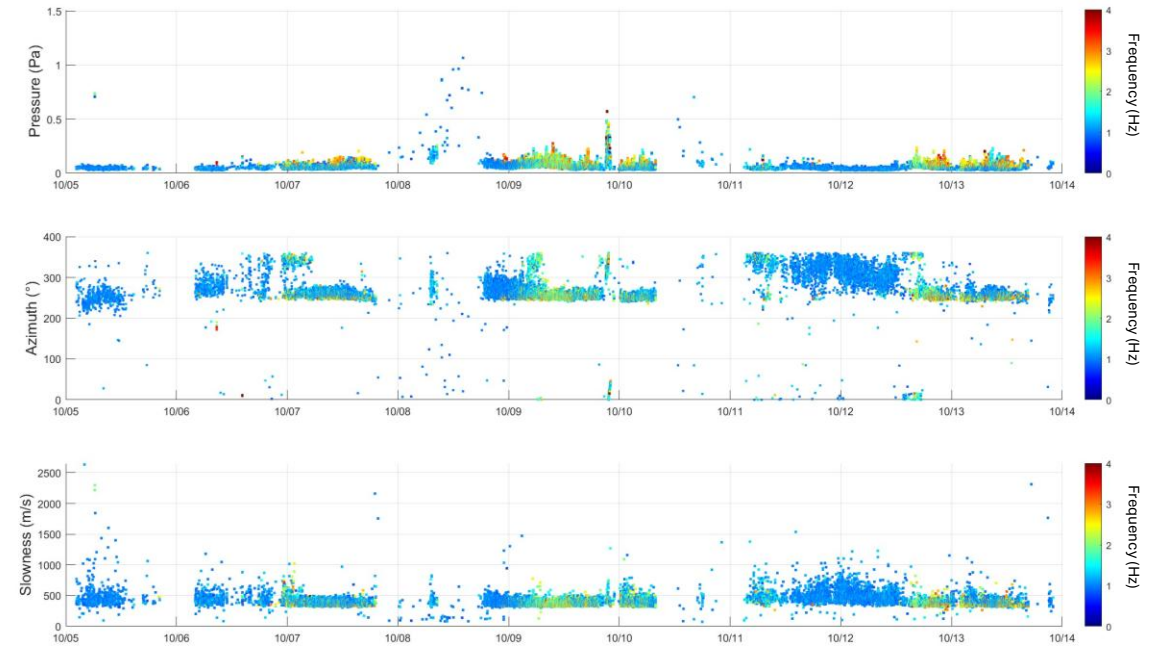
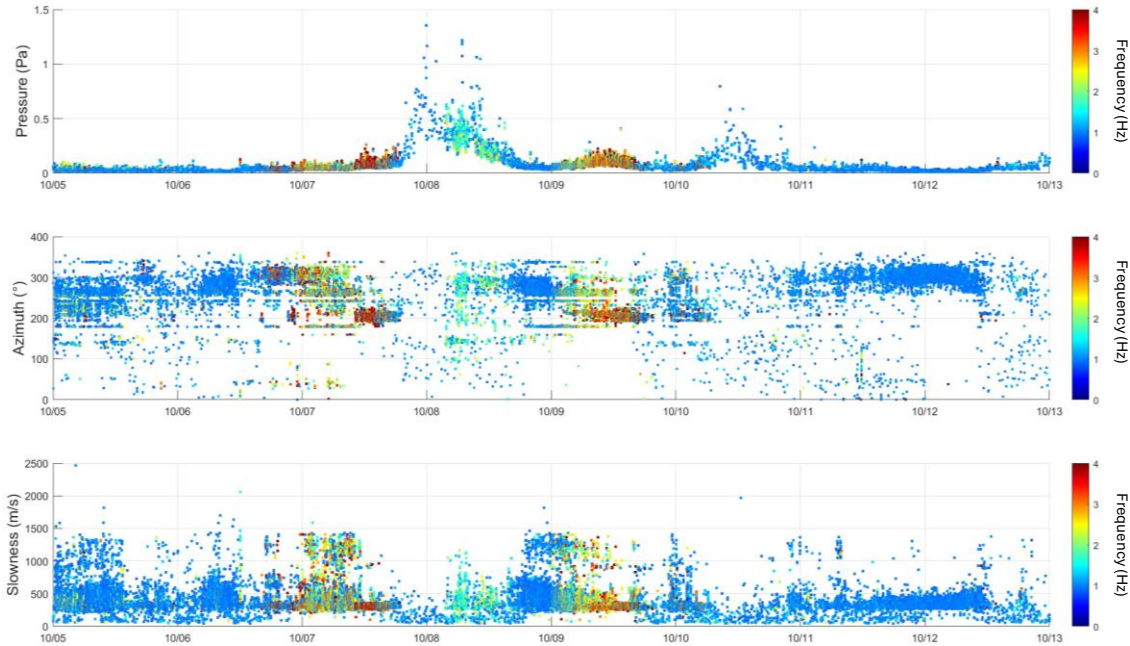
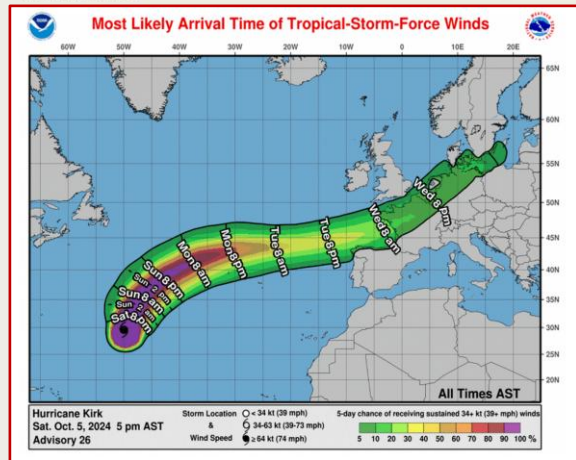
TER



### Events Analysis: Storms

SJ1

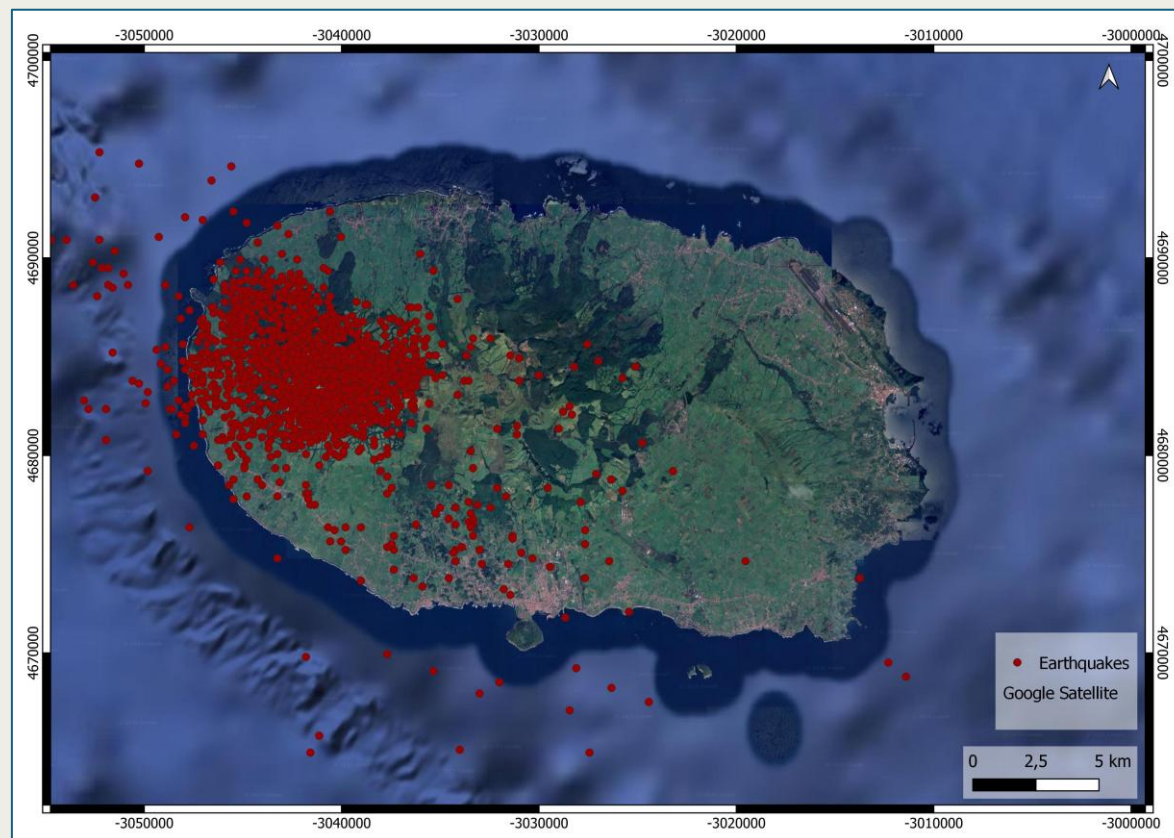
TER



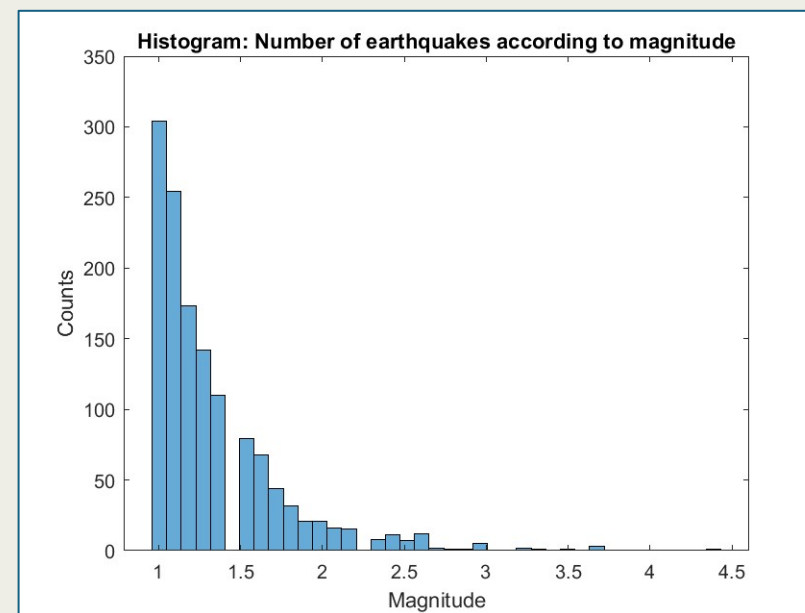




## Events Analysis: Seismo-volcanic crisis ongoing in Terceira Island



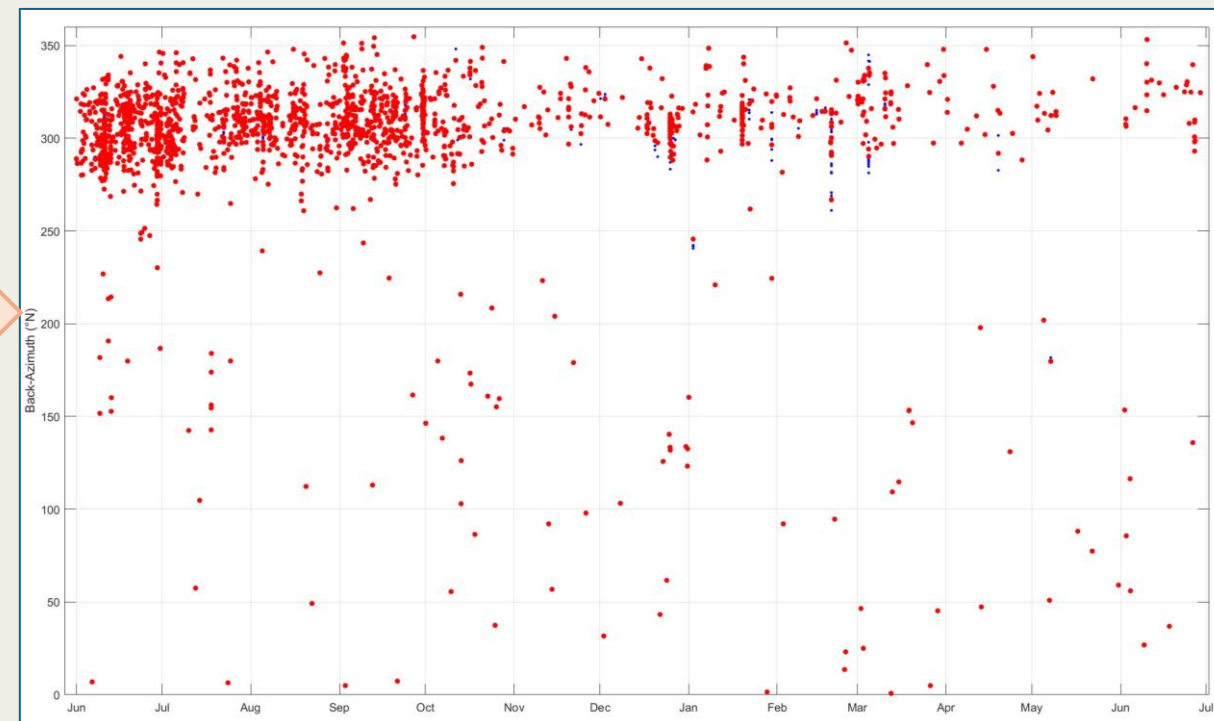
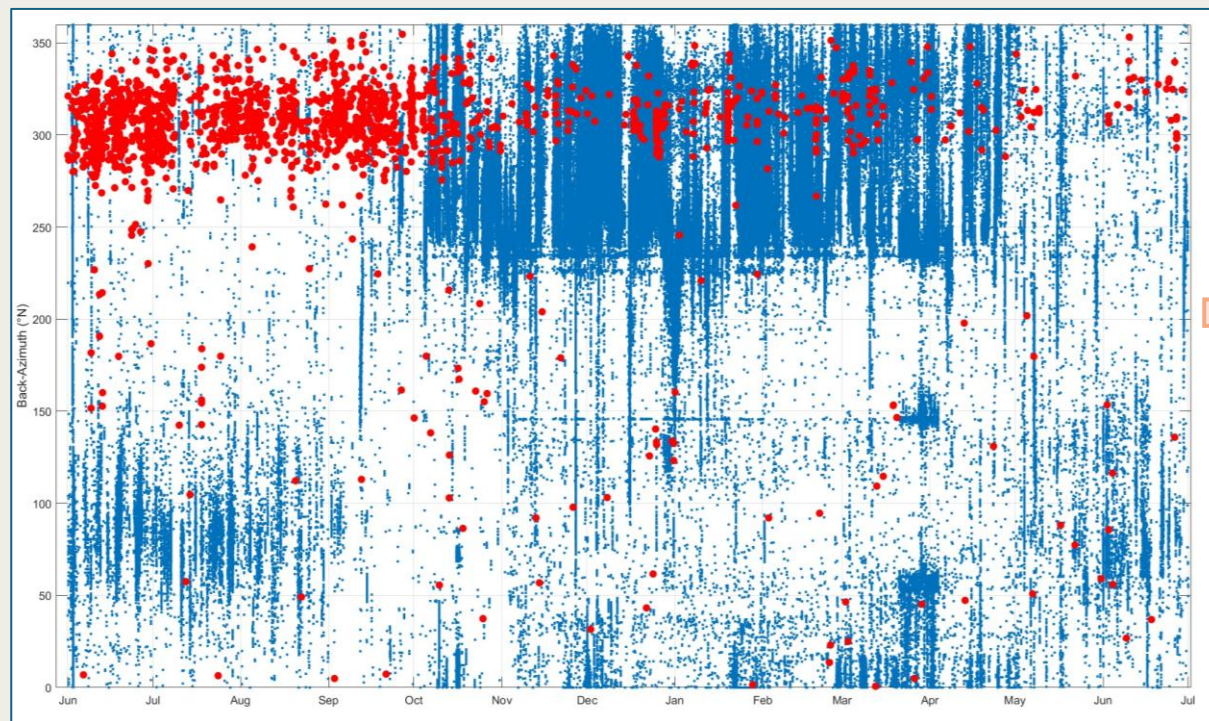
TER: 1794 events in one year





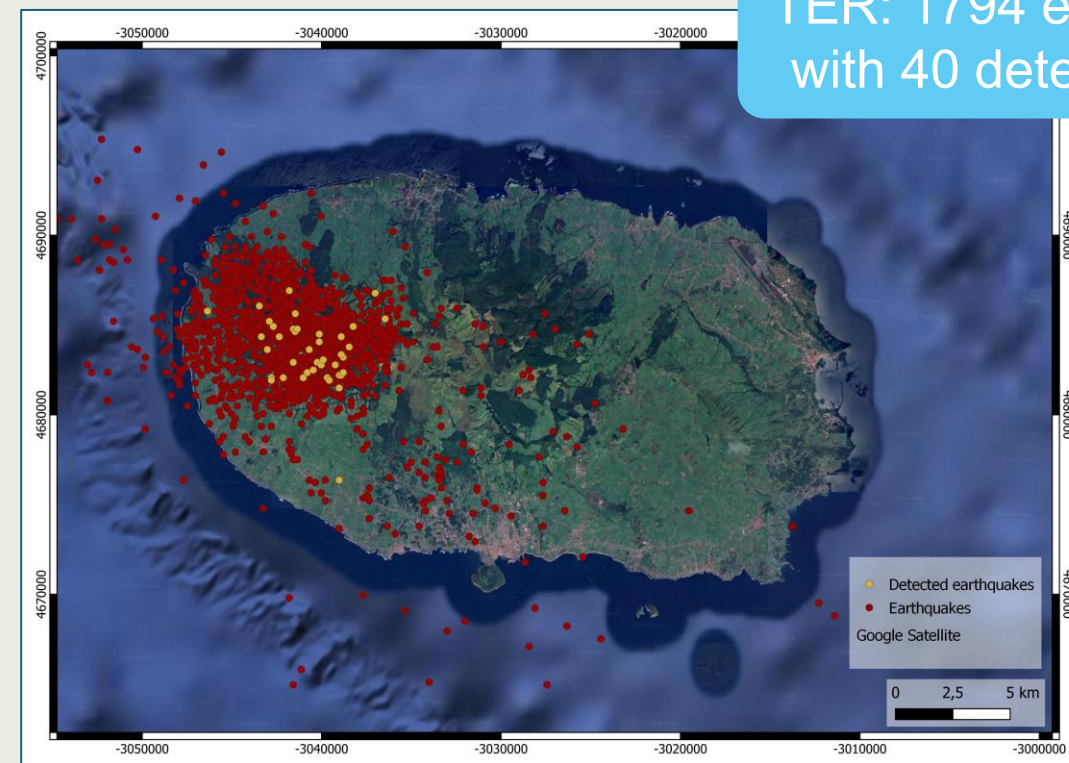
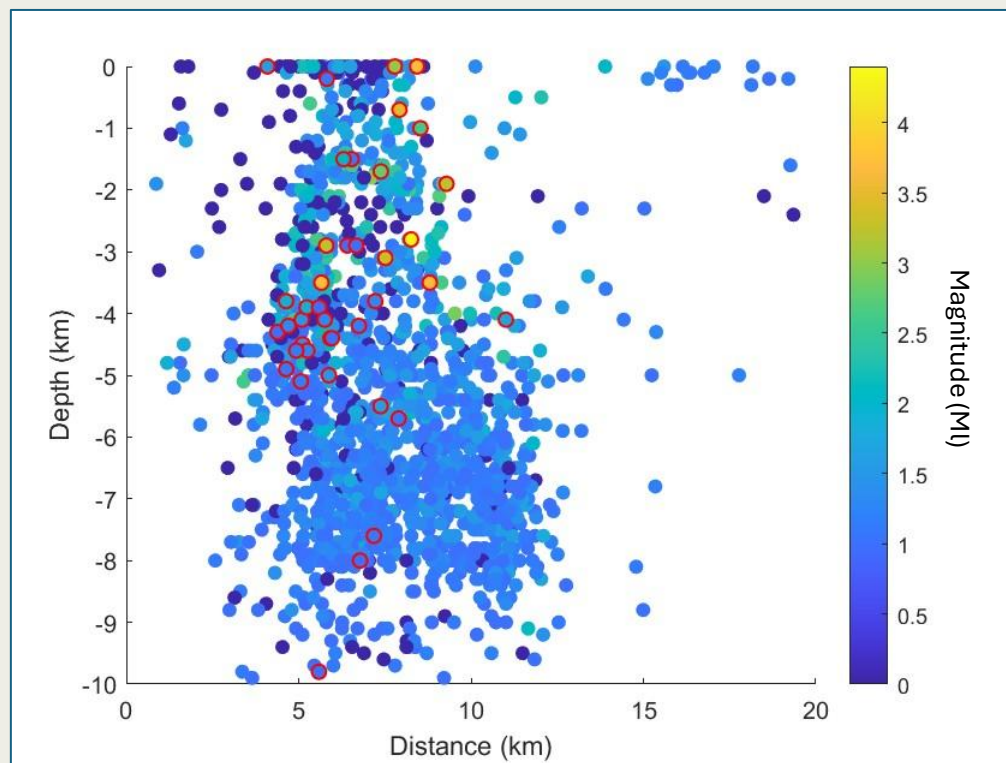


## Events Analysis: Earthquakes



## Events Analysis: Terceira earthquakes

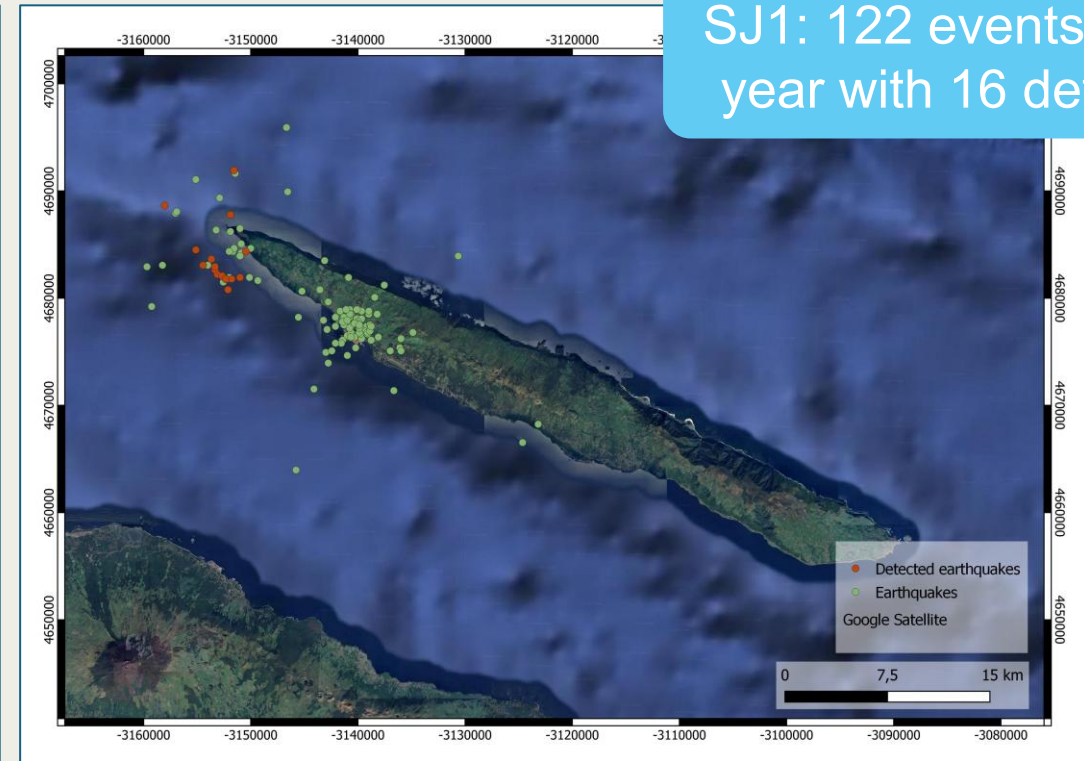
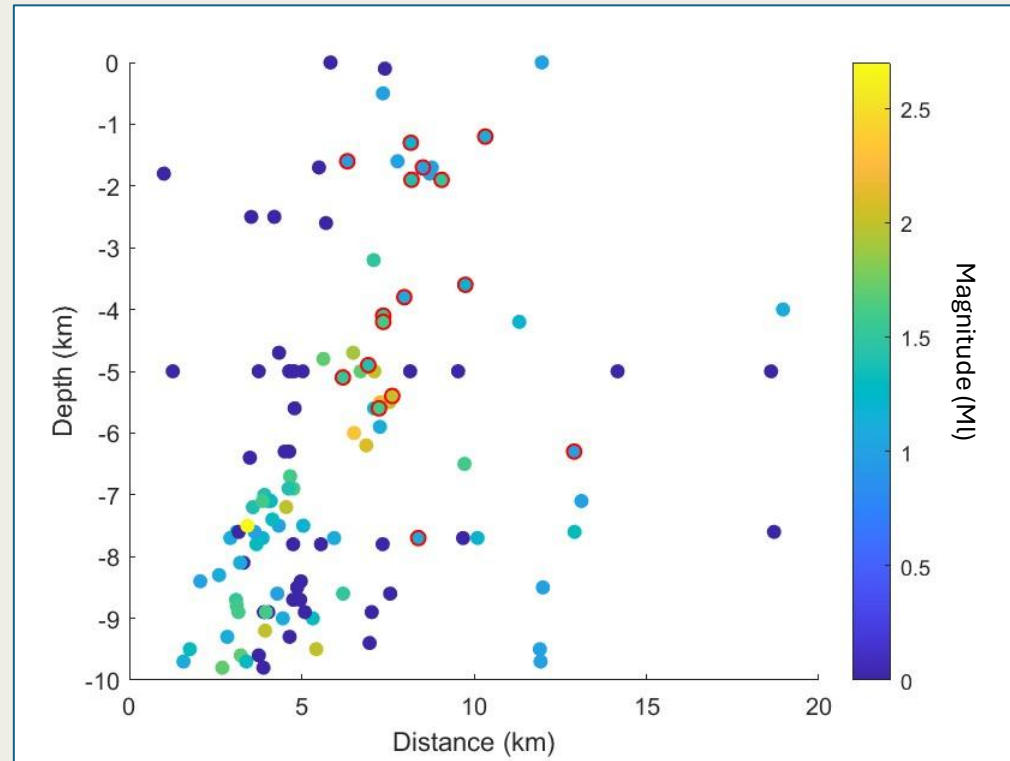
TER: 1794 events  
with 40 detected



Shallow earthquakes ( $< 8$  km) with magnitude larger than 1.5  $M_l$  and distances less than 12 km from the array



## Events Analysis: São Jorge earthquakes



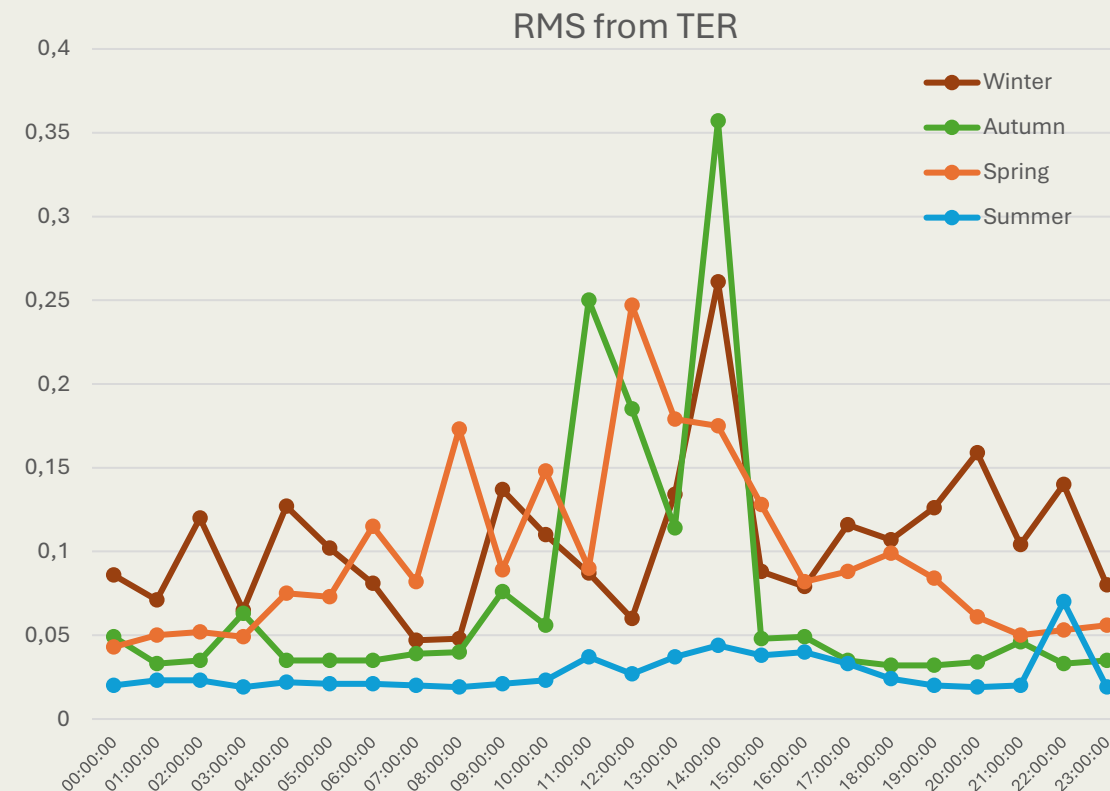
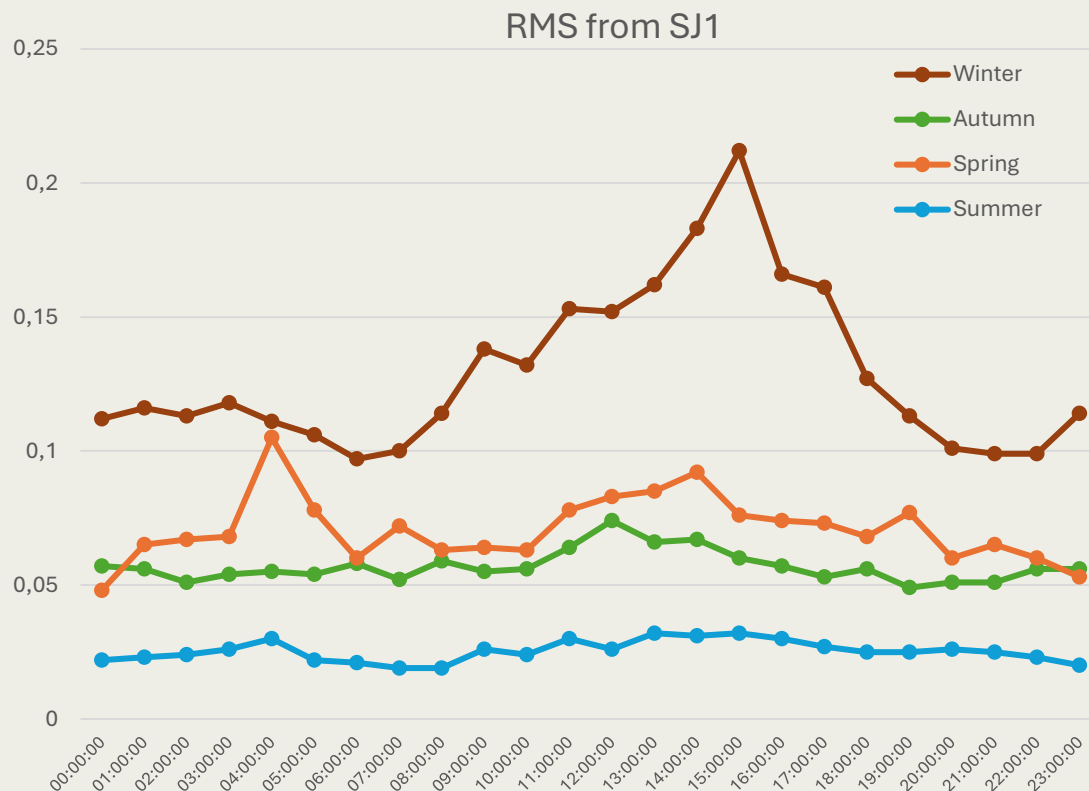
SJ1: 122 events in one year with 16 detected

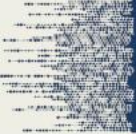
Shallow earthquakes ( $< 8$  km) with magnitude larger than 1.5 Ml and distances less than 12 km from the array



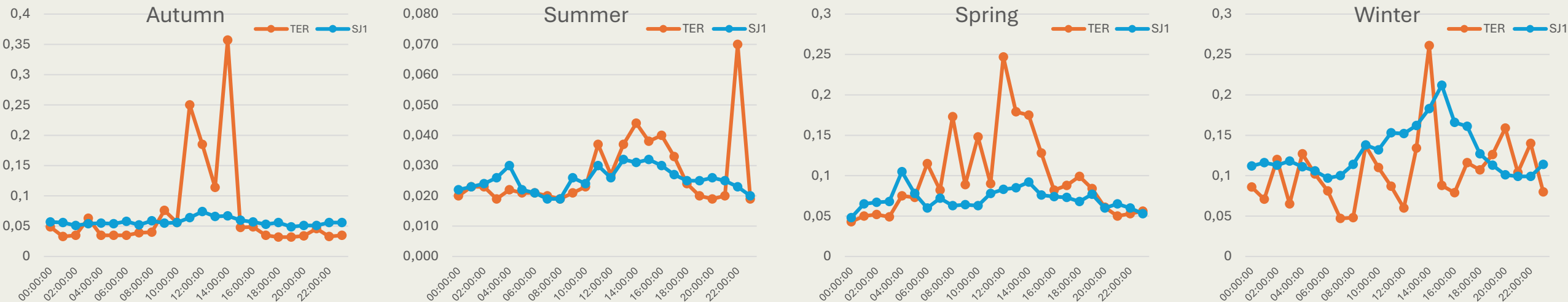


## RMS



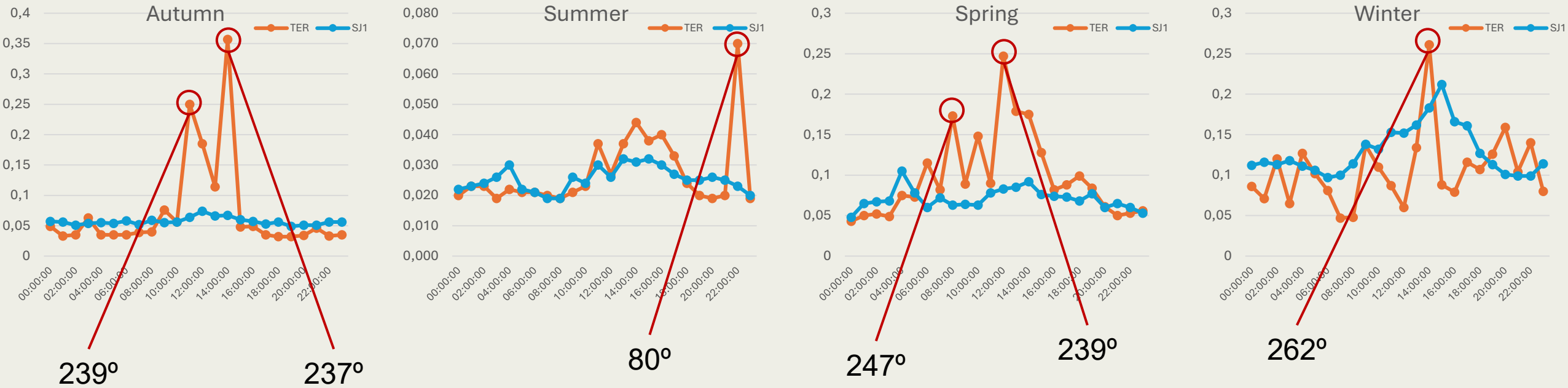


## RMS





## RMS



The detections to the west are consistent with the quarry that is in operation during the day.







## Conclusion

1-year detections:  
Expected seasonal variance,  
in all arrays

Terceira array is affected by  
local sources of energy during  
daytime, like quarry and blast  
activities nearby (230 to  
260°). São Jorge is free of  
these occurrence.

Storms:  
Produce high energy detected  
at the arrays in terms of high  
amplitude (more than 0.5 Pa)  
and high frequency (more  
than 2 Hz) detections.

Earthquakes:  
Detections in the arrays  
depend on the hypocentre  
shallowness, magnitude and  
distances of the the array.  
Detectability also depends on  
the noise level at the array  
(with large daily noise  
variation in Terceira).

Thank You