

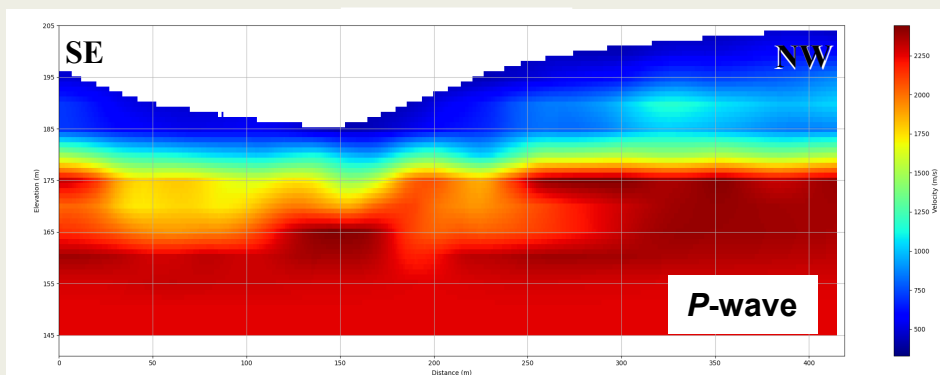


Brodic Bojan^{1,2}, Koivisto Emilia¹ and Labak Peter¹

¹ CTBTO Preparatory Commission, On-Site Inspection Division; ² Leibnitz Institute for Applied Geophysics

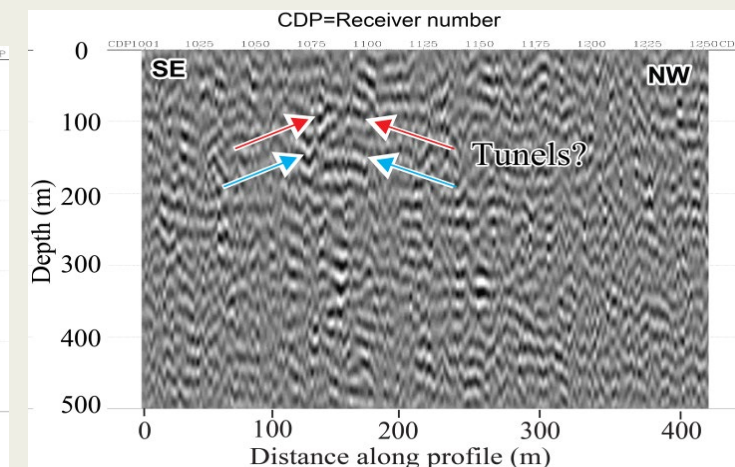
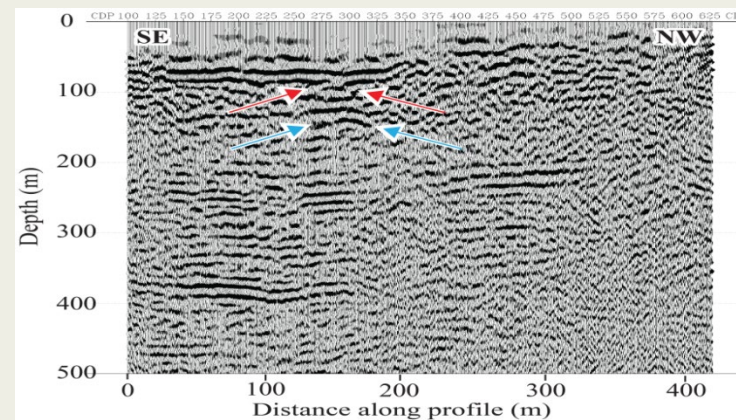
P3.3-527

UK FT23 ACT refraction result – Profile 1



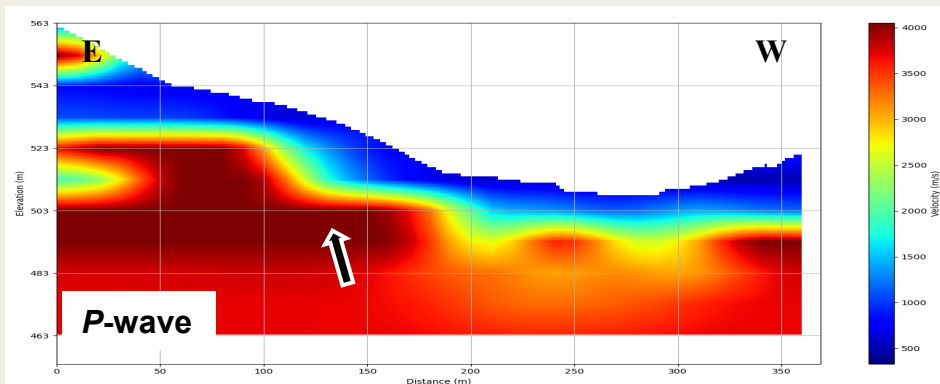
FT23 P-wave first arrival traveltimes tomography result. Although the rays do not reach tunnel depth, near-surface is well resolved.

UK FT23 ACT/RES results – Profile 1



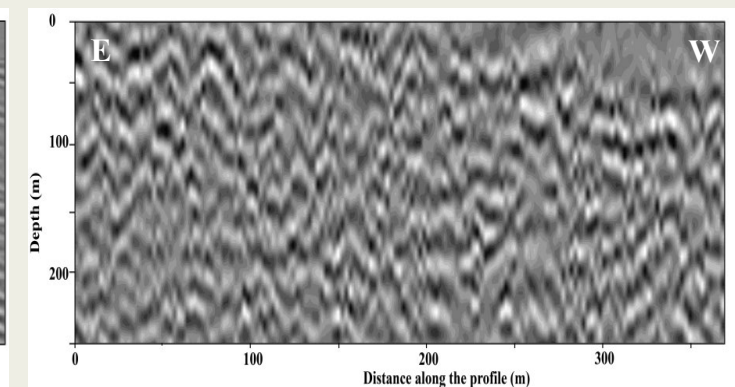
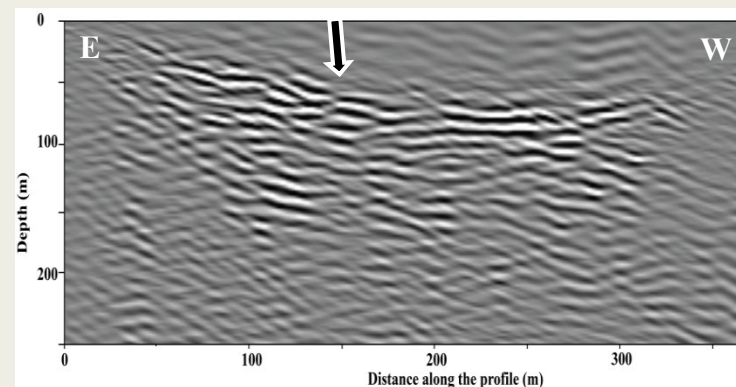
FT23 P-wave unmigrated stacked seismic (left) and RES interferometry via auto-correlation (right) results. Red arrows show at possible P- and blue S-wave tunnel diffractions.

Hungary BUE24 ACT refraction result



BUE24 P-wave first arrival traveltimes tomography result. Tunnels are located around distance ~130 m where velocities abruptly change, as indicated by black arrow.

Hungary BUE24 ACT/RES results



BUE24 P-wave unmigrated stacked seismic section (left) and RES interferometry via auto-correlation (right) results. Tunnels are located around distance ~130 m.