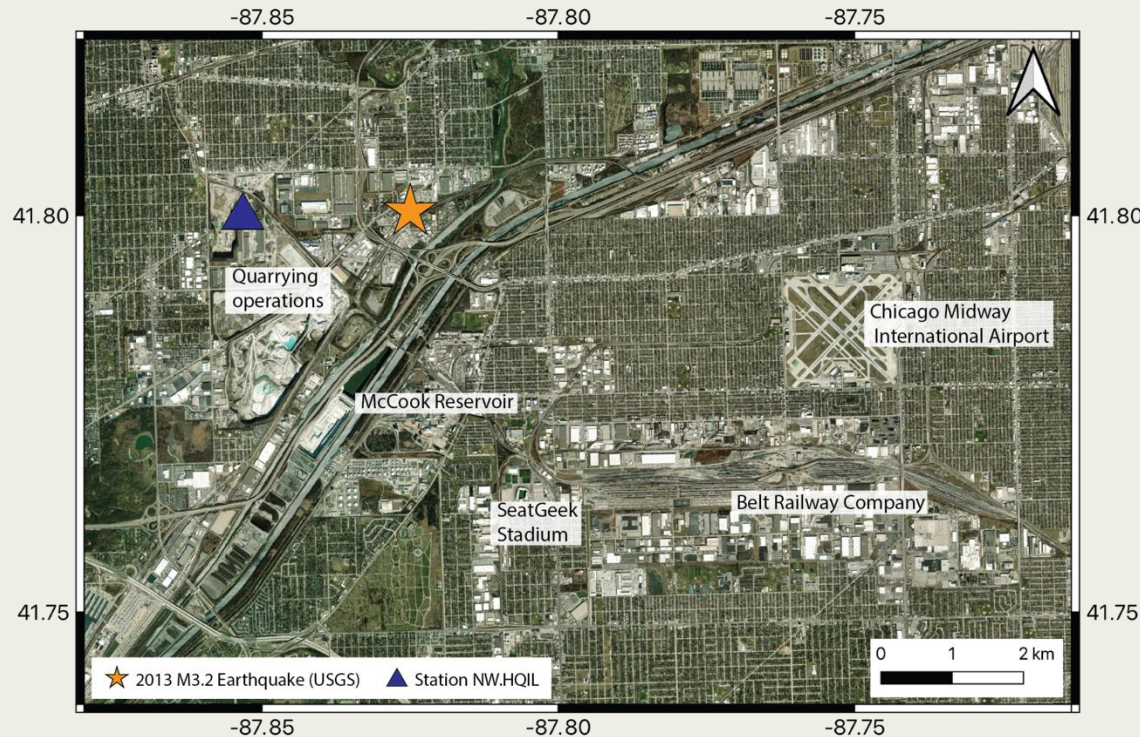


Ann Mariam Thomas, Omkar Ranadive, and Suzan van der Lee, Northwestern University, Evanston, IL, USA

P2.1-685

Improving seismic event detection in noisy, built environments require more AI-ready datasets of dynamic, anthropogenic noise: a challenging and time-consuming task



Come by our poster to learn about our...

- **Simple, semi-automated workflow to detect and cluster** anomalous events in two years of continuous data
- **Labelled dataset** of 1000+ events in the Chicago area which include surface quarry blasts, underground blasts, and industrial operations machinery operations