

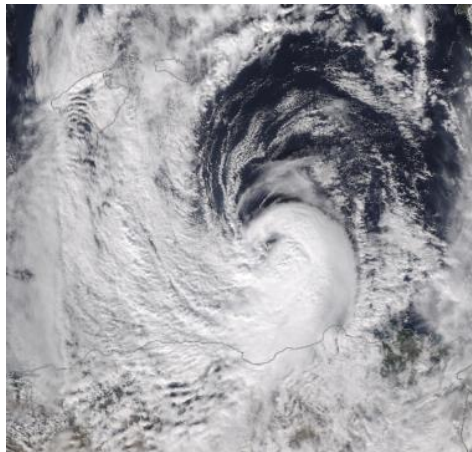
Listowski et al.

CEA / DAM / DIF, Arpajon, France

As other severe weather events, **cyclones are a source of coherent noise** at IMS infrasound stations.

We demonstrate the **detection of infrasound waves originating from Mediterranean Hurricanes** at IS48.

We **identify the sources within medicanes**, combining complementary datasets and microbarom modelling.



Medicane Trudy
(November 2019)
Credit: NOAA/JPSS

