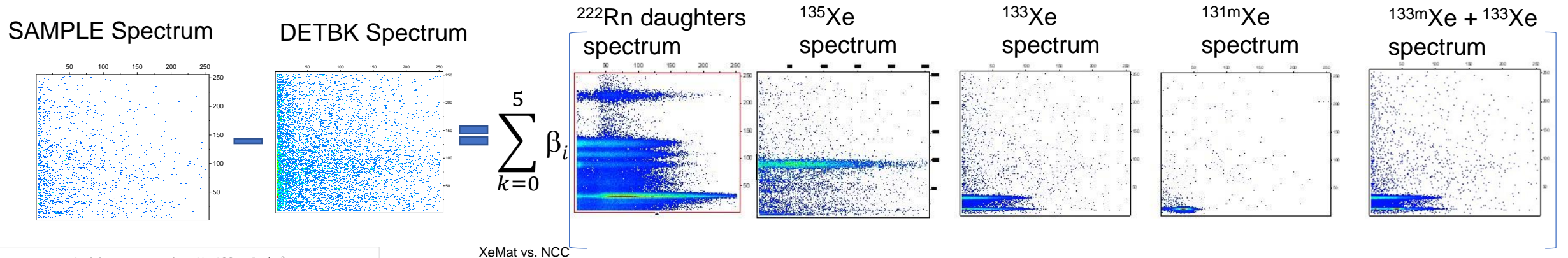
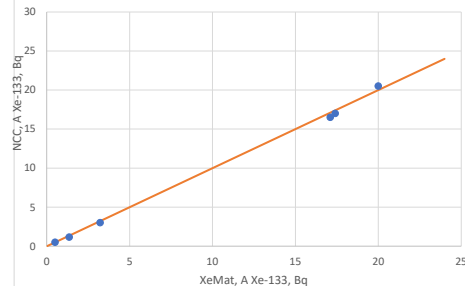
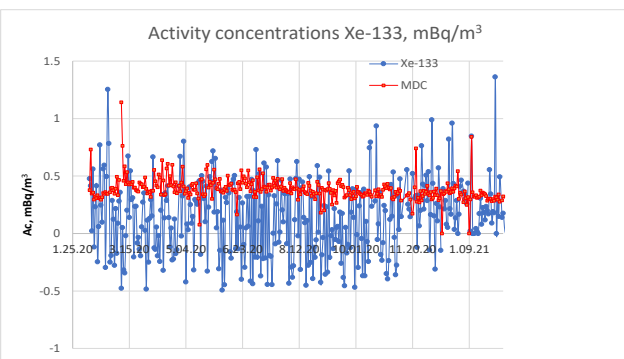


- There are several different approaches for estimating radioxenon activity by analyzing beta-gamma coincidence spectra.
- It is necessary to compare methods for obtaining more stable and accurate results, especially in the case of poor statistics.
- The most important and general approaches to activity estimates based on beta-gamma spectrum data were considered.
- Some calculations were carried out on the MIKS data using various methods.



XeMat vs. NCC



If you want to learn more about this, come see my e-poster during session P3.6 on this date or access it online on the SnT2023 Conference platform!